

Resurrection Lutheran Church

9907 Sappington Road, 63128 | 314.843.6633

www.lcrstl.org | church@lcrstl.org

Pastor David Gruenwald | 314.322.0913 | gruenwald@lcrstl.org

Pastor Nick Schram | 989.295.0414 | schram@lcrstl.org

Justin Knabach | 314.489.3919 | justin@lcrstl.org

pray

RECENT PRAYER REQUESTS **new prayer requests are in bold*

Bill, Angela, Nick, Drea, Magnus, Kendal, Gary, Judi, Amanda, Joe

FIRST RESPONDERS AT HOME Brandon, Randy, Rachel, Jason, Robin, Mike, Jacob

FOR THOSE WITH CHILD Kelsey, Meghan, Courtney, Ashley

FOR THOSE IN OUR ARMED FORCES

John Bantle, Michael Crain, Jake Barbosa, Xyon Scott, Kyle Finley, Cody Canida, Nick Oberkrom, Chris Whelan, Matthew Moss, Joseph Collins, Jeremy Brown, Zane Robertson, Carey Thomas, George Stahl, Drew, Ben Aumiller

WE PRAY FOR OUR PARTNERS IN KINGDOM BUILDING

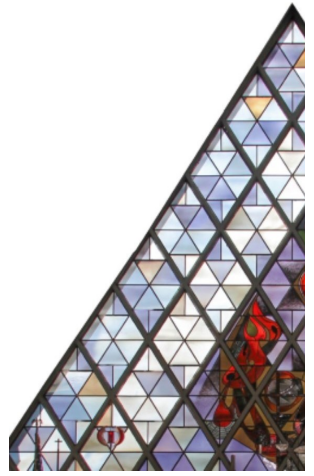
Zach Thornton, Tyler Martin, Pamela Vue, Jim Wiencke & Stephen Christian

FOR THOSE WHO MOURN

Family and friends of Mark Banes, brother in law of Ken and Debby Stuckmeyer

PRAYER OF THANKSGIVING

For the birth of Eloise Brown, granddaughter of Carol and Mike Brown



SCAVENGER HUNT

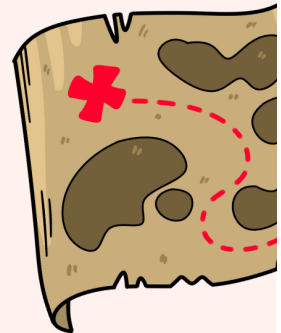
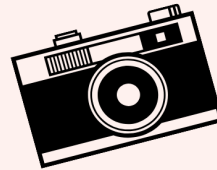
6PM
FRIDAY, OCTOBER 17

Resurrection Lutheran Church | 9907 Sappington Rd.

Anyone over 18 is welcome to participate

Dinner is provided

Babysitting is available for those with younger children



www.lcrstl.org



RSVP REQUIRED



Altar Flowers

Altar Flowers are donated by the Seltz, Jarzenbeck and Buck families in celebration of Ron and Jan Becker's 60th wedding anniversary.

Please Note: the plastic/metal cups that the flowers come in, must be returned to the church office.



Register at lcrstl.org

Green Park Lutheran School is seeking a Director of Advancement and Donor Relations to begin Fall 2025. This position will play a vital role in advancing Green Park's mission by building relationships with donors, alumni, and community partners, as well as leading donor development, campaigns, and alumni engagement. Candidates should be passionate about Lutheran education and skilled in communication, relationship-building, and development strategy. For more information or to apply, please contact Lisa Waltenberger, Lisa.Waltenberger@greenparklutheralschool.org.

We have an opening for the position of Coordinator of Discipleship & Volunteer Ministry. This role will work under the direction of the Pastor of Discipleship, and alongside the Director of Children's Ministry, serving the congregation by focusing on the spiritual formation of youth, with an emphasis on intergenerational ministry. This role also seeks to strengthen the ministry capacity of the congregation by recruiting, equipping, and caring for volunteers across a variety of ministries. Additionally, this role will collaborate with staff and ministry leaders to assist in planning and executing seasonal events and activities.

This is a regular part-time position scheduled for 30 hours per week. The ideal candidate has a Bachelor's degree in education, youth ministry, theology, or a related field. Experience working with and supervising congregational members, including youth and volunteers, in a Christian setting is preferred. Strong organizational, communication, and relational skills are essential. Requires flexibility in hours worked, including evenings and weekends as needed.

If you are interested in learning more about this opening, please contact Karen George-Scherr by October 6, at church@lcrstl.org or 314.756.2956.

LCMSFoundation

TODAY | TOMORROW | FOREVER

Registration is required, please contact our gift planning counselor, Erich Faulstich 314-779-6494 or email erich.faulstich@lfnd.org

PLAN TO ATTEND! We'll be hosting a lunch & learn funeral & Christian estate planning workshop after the 11 o'clock service on October 26th. We'll be featuring Pastor David Gruenwald, estate attorney Charles James and a Kutis funeral home director.

VANCO ONLINE GIVING

Visit www.lcrstl.org

Click on the Donate tab on the far right

Click on the VANCO Giving button

Click on the Create Profile button or follow onscreen instructions to create an online profile and schedule your onetime or recurring contributions

DONATE BY SMART PHONE

To begin mobile giving Scan the QR code to the right or go to www.lcrstl.org/donate-1



WE NOW ACCEPT VENMO FOR CONTRIBUTIONS!

Venmo: @LCRres



**Guest Wi-Fi Password is
John11:25**